

Guglielmo Pampiglione

Integrated Pest Management Consultant Copyr
guglielmopampiglione@icloud.com

Dino Scaravelli

Laboratorio Zoologia Applicata, Forlì and Department of Biological,
Geological, and Environmental Sciences, University of Bologna
dino.scaravelli@gmail.com

INTRODUCTION

Flies control is still a complex problem in many systems but particularly in animal husbandry. An unstructured approach remains towards them in the various affected activities, which still too often are activated only in the face of an emergency. Even in modern farms, IPM for flies is not considered and often tackled clumsily and only when it is too late to prevent.



HEAVY INFESTATION

MATERIALS & METHODS

We consider experiences from interviews, monitoring activities, inspections of IPM workers and relationship with type of farms and their management.

CONTROL BY PHYSICAL MEANS



YELLOW PANELS



FLY TRAP

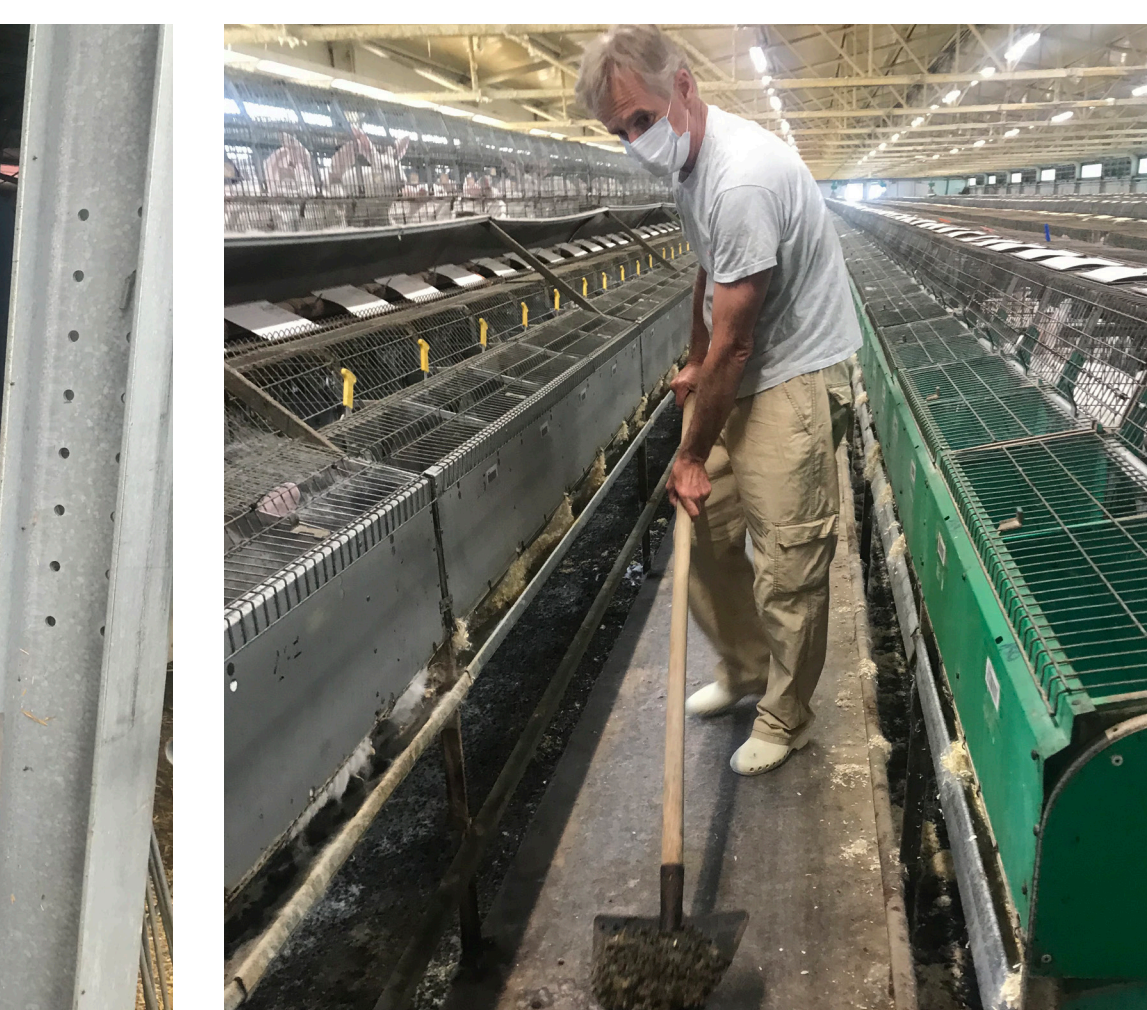
INSPECTION AND MONITORING



INSPECTION



LARVICIDE MONITORING



RESULTS

The inspection experience of recent years, addressed to both breeders and IPM operators, has mainly shown these gaps:

- Lack of knowledge of the life cycle of flies,
- Lack of knowledge of the vector role of flies for many infections and parasites,
- Failure to recognize the different larval stages and pupae in order to organize the control,
- Lack of knowledge about critical role of positions in larvicidal treatments,
- Do not consider the usefulness of physical-mechanical actions.



LACK OF WEED CONTROL
AND EXTERNAL CLEANING

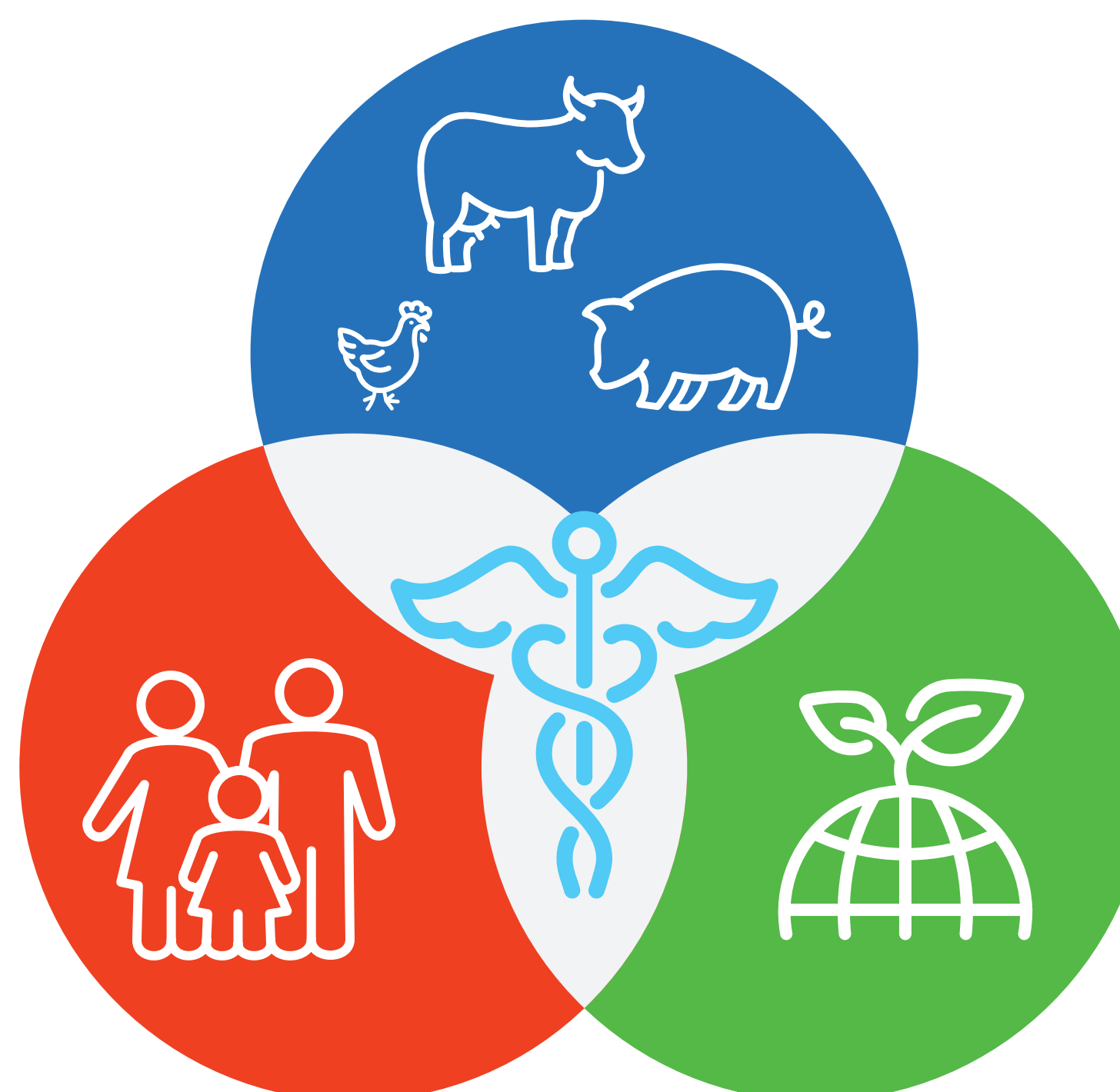


FLOOR FULL OF PUPAE OF FLIES AS
A RESULT OF MISMANAGEMENT

CONCLUSION

The authors emphasize that the lack of efficacy in control derives from:

- poor training on flies IPM for both farmers and technicians,
- the national veterinary service, in charge of controls, do not have any training and merely monitor the use of authorized products;
- flies problems is mostly seen as a secondary aspect that need investments only in emergency situations.
- flies are still too often perceived as a simple disturbance to operators and animals rather than a factor that can cause production losses.



“ONE HEALTH” APPROACH

In the frame of the “One Health” approach, the prevention is a priority to ensure control strategies of pests and their important role in transmission of pathogens and to avoid stress in the animals.

Acknowledgments Breeders, veterinarians, stable managers and Copyr dealers.

Literature consulted

- Dent D. (2000). Insect Pest Management CABI Pub., University Press, Cambridge, UK. 410 pp.
- Waldron, J. K., D. W. Watson, P. E. Kaufman, D. A. Rutz. 2000. Integrated Management of Flies In and Around Dairy and Livestock Barns. Cornell University, Ithaca, NY.
<https://ecommons.cornell.edu/bitstream/handle/1813/42360/barnflies-FS-NYSIPM.pdf;sequence=1>